

**MRI-SAFE MOBILE LEADED ALUMINUM BARRIER  
WITH 36" X 48" WINDOW**

**PRODUCT INFORMATION**

[PHILLIPS-SAFETY.COM](http://PHILLIPS-SAFETY.COM)

**COPYRIGHT ©2025. ALL RIGHTS RESERVED**



**PHILLIPS SAFETY  
PRODUCTS INC.**

## PRODUCT INFORMATION

### MRI-SAFE MOBILE LEADED ALUMINUM BARRIER WITH 36" X 48" WINDOW



The MRI-Safe Mobile Leaded Aluminum Barrier with 36" x 48" Window is a portable full-body radiation barrier designed to protect against secondary radiation. This Phillips Safety barrier features 2.0mm lead equivalent opaque panels of solid, leaded x-ray protection with contoured sides and is safe to be used in Magnetic Resonance Imaging procedures. It has a 36" x 48" window panel which can be chosen in two different materials: a 2.0mm lead equivalent high-quality Schott leaded glass or a 0.5mm lead equivalent leaded acrylic. With an overall size of 75" x 52.5", it travels easily on its four-caster locking base steel legs. Please note it is recommended that two people move the barrier together at all times.

## SPECIFICATION

**LEADED BARRIER SIZE: 75" x 52.5"**

**VIEWING PANEL SIZE: 36" x 48"**

**PROTECTION LEVEL : 2.00 mm Pb LE**

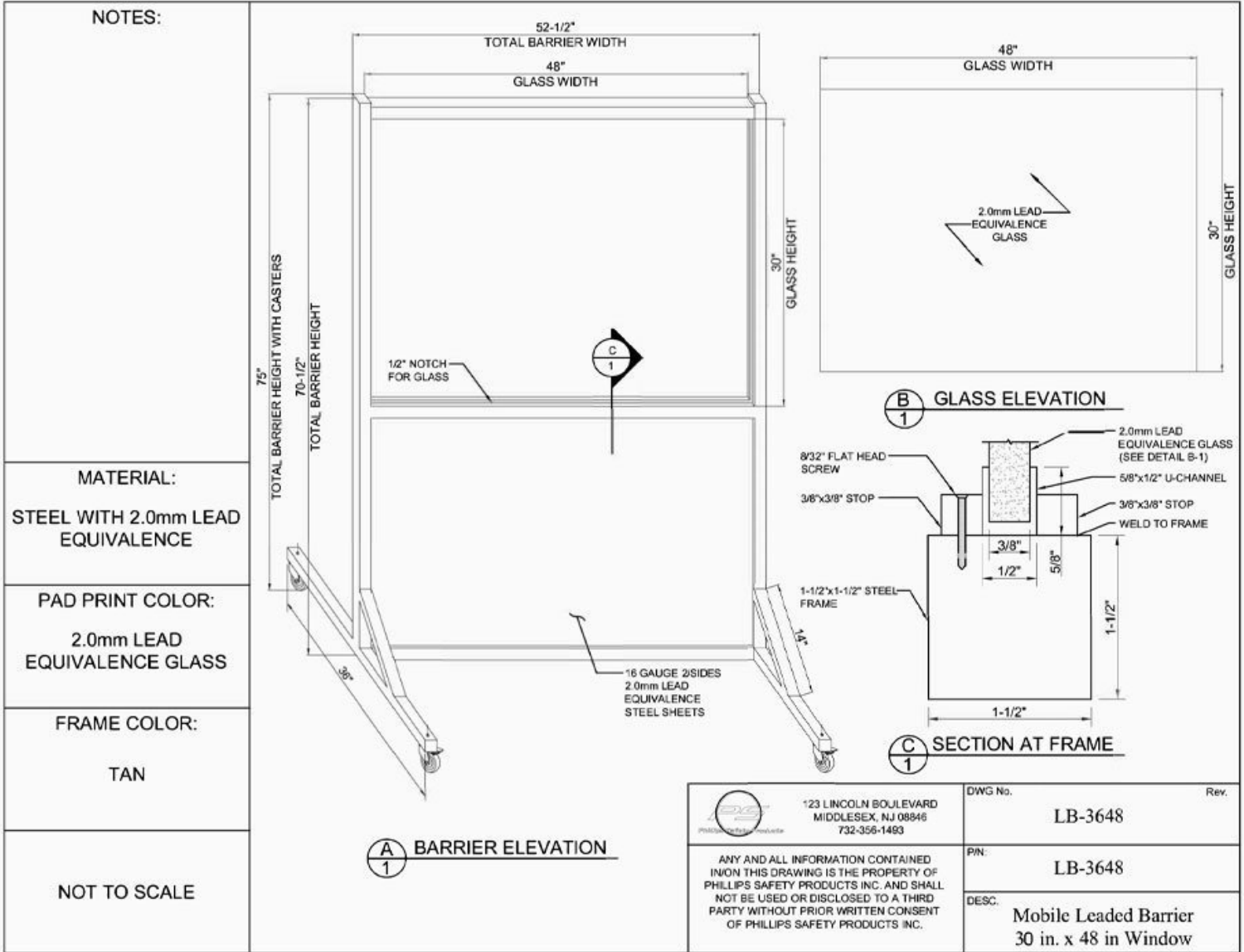
**MATERIAL: Aluminum**

**WINDOW MATERIAL: Schott glass or Acrylic**

**FEATURES: Viewing panel and four-caster locking base**

**PRODUCT INFORMATION**

**MRI-SAFE MOBILE LEADED ALUMINUM BARRIER WITH 36" X 48" WINDOW**




**NOTES:**

**MATERIAL:**  
STEEL WITH 2.0mm LEAD EQUIVALENCE

**PAD PRINT COLOR:**  
2.0mm LEAD EQUIVALENCE GLASS

**FRAME COLOR:**  
TAN

NOT TO SCALE


 123 LINCOLN BOULEVARD  
 MIDDLESEX, NJ 08846  
 732-356-1493

ANY AND ALL INFORMATION CONTAINED IN/ON THIS DRAWING IS THE PROPERTY OF PHILLIPS SAFETY PRODUCTS INC. AND SHALL NOT BE USED OR DISCLOSED TO A THIRD PARTY WITHOUT PRIOR WRITTEN CONSENT OF PHILLIPS SAFETY PRODUCTS INC.

DWG No.	LB-3648	Rev.	
P/N:	LB-3648		
DESC.	Mobile Leaded Barrier 30 in. x 48 in Window		

**PRODUCT INFORMATION**


MRI-SAFE MOBILE LEADED ALUMINUM BARRIER WITH 36" X 48" WINDOW

# CONTACT

Should you need any further information,  
please do not hesitate to contact us.

123 Lincoln Blvd, Middlesex, NJ 08845, USA 

+1 (866) 757 1307 

service@phillips-safety.com 

www.phillips-safety.com 