

MOBILE LEADED BARRIER WITH 24" X 20" WINDOW

PRODUCT INFORMATION

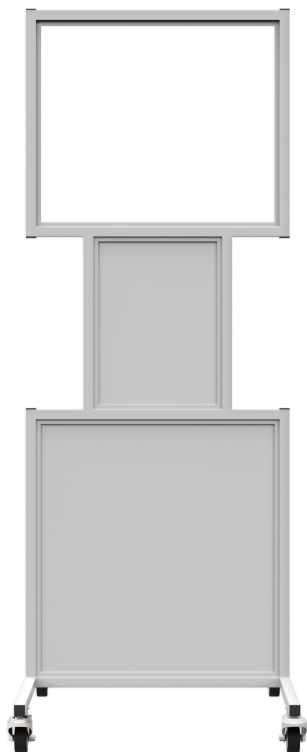
PHILLIPS-SAFETY.COM

COPYRIGHT ©2025. ALL RIGHTS RESERVED



PHILLIPS SAFETY
PRODUCTS INC.

PRODUCT INFORMATION
MOBILE LEADED BARRIER WITH 24" X 20" WINDOW

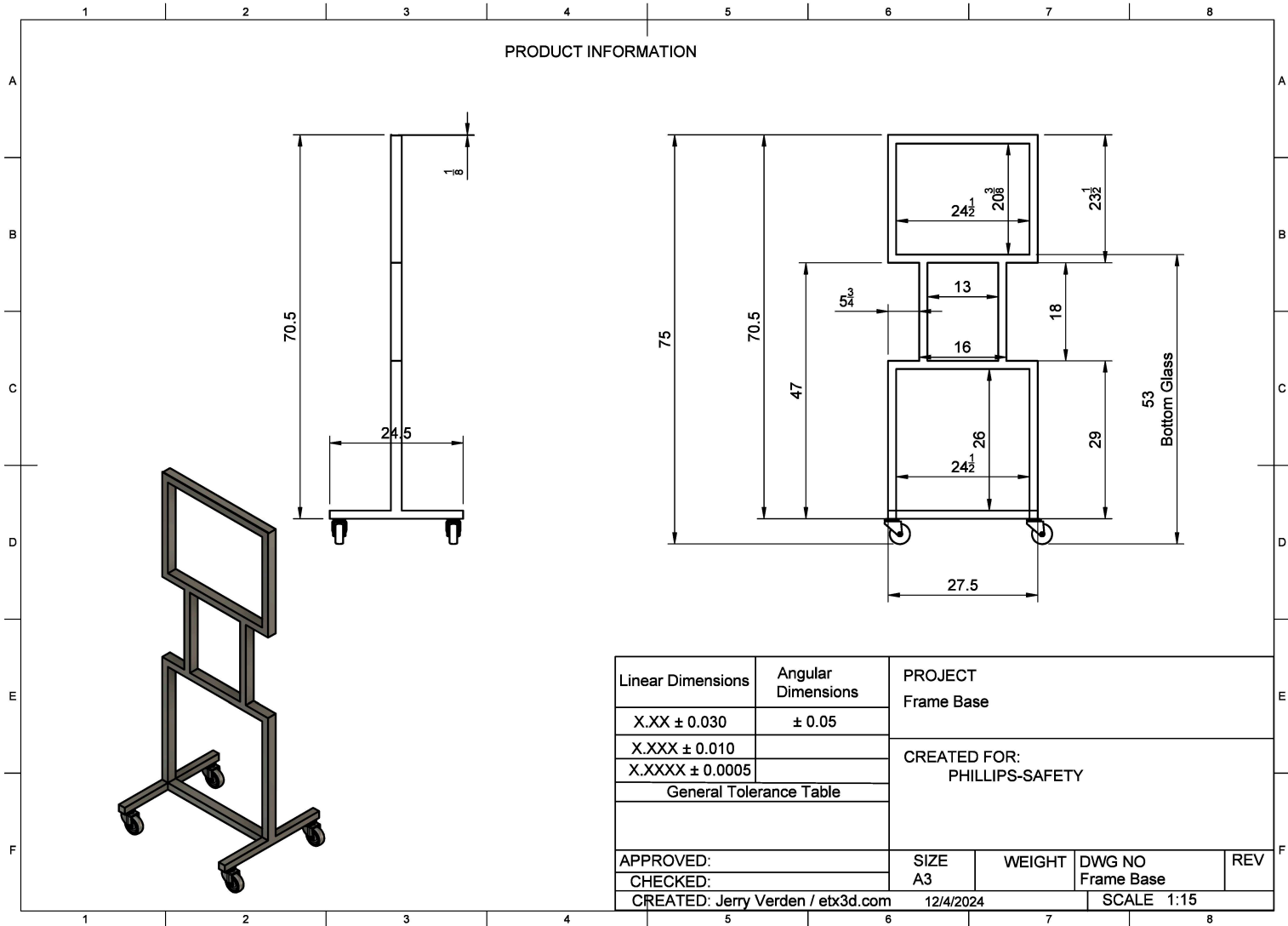


The Mobile Leaded Barrier with 24" x 20" Window is a portable, full-body radiation barrier designed to protect against secondary radiation. It features 2.0mm lead equivalent opaque panels of solid, leaded x-ray protection with contoured sides. Its 24" W x 20" H lead equivalency window is a viewing panel which can be chosen in two different materials: a 2.0mm lead equivalent high-quality Schott leaded glass or a 0.5mm lead equivalent leaded acrylic. With an overall size of 27.5" W x 75" H, this Phillips Safety leaded barrier travels easily on its four-caster locking base steel legs. It is recommended that two people move the barrier together at all times.

| SPECIFICATION | |
|---|--|
| MATERIAL: Lead Glass or Acrylic with opaque panel solid lead | SIZE: 27.5" x 75" |
| FEATURES: Portable, leaded X-ray protection with contoured sides, heavy duty, 4-caster base | PROTECTION: 2.0mm Pb LE opaque panels |
| | WINDOW PROTECTION: leaded glass 2.0mm Pb LE or acrylic 0.5mm Pb LE |

PRODUCT INFORMATION

MOBILE LEADED BARRIER WITH 24" X 20" WINDOW



PRODUCT INFORMATION

MOBILE LEADED BARRIER WITH 24" X 20" WINDOW

CONTACT

Should you need any further information,
please do not hesitate to contact us.

123 Lincoln Blvd, Middlesex, NJ 08846, USA



+1 866 575 1307



service@phillips-safety.com



www.phillips-safety.com



PHILLIPS SAFETY
PRODUCTS INC.

PHILLIPS-SAFETY.COM